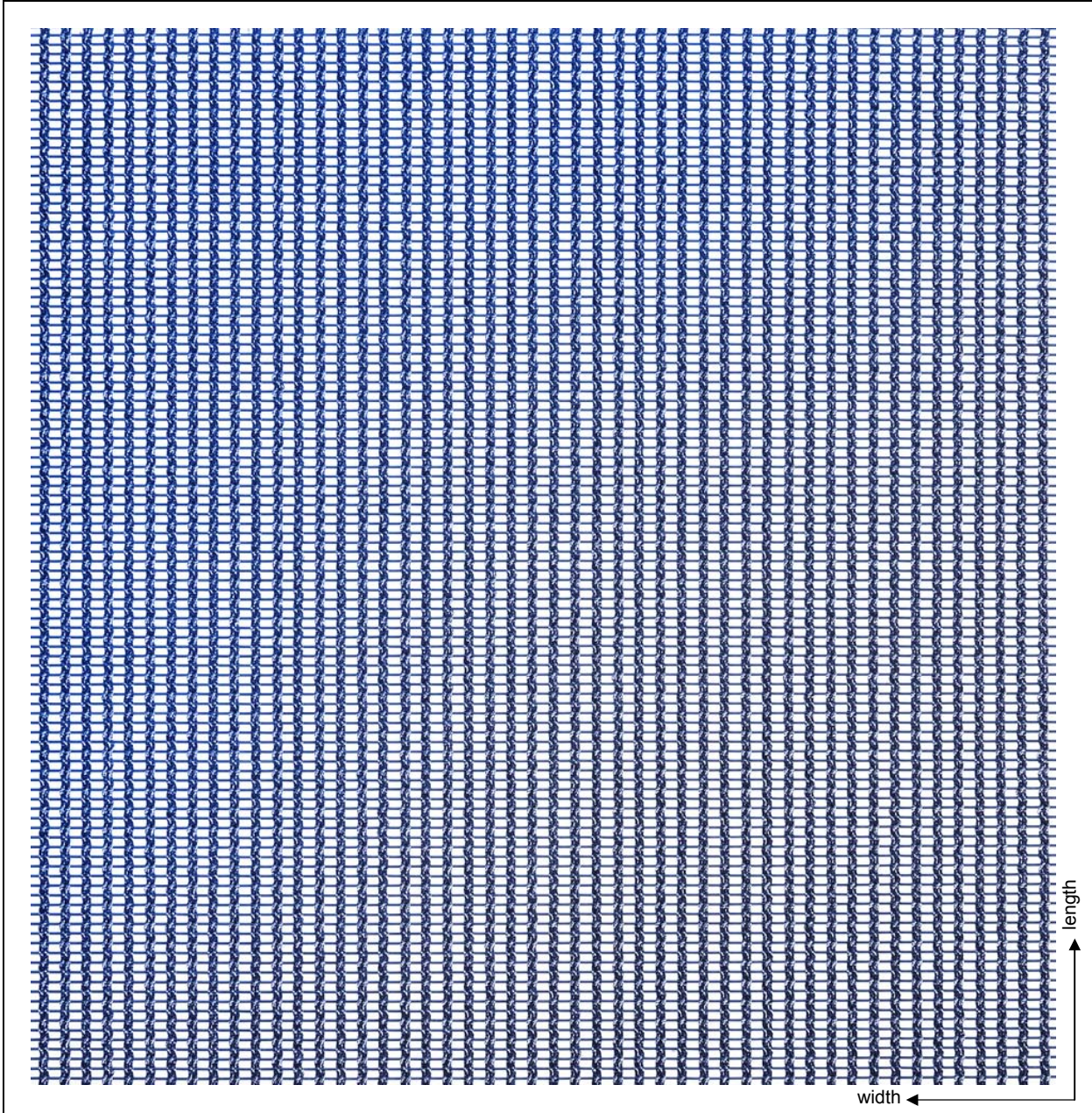


LT 70



type of mesh	aperture (mm)	wire diameter (mm)	weight (kg/m ²)	open area (%)	standard width (m)
Miniflex	2 x 0.93	3 x 0.45/0.5	2.25	37	2.0
application			mounting		
<ul style="list-style-type: none"> • interior design • claddings of walls and ceilings • partitions 			<ul style="list-style-type: none"> • tensioning selvedge • eye rivet • glue framing • slotted tube • angled framing 		