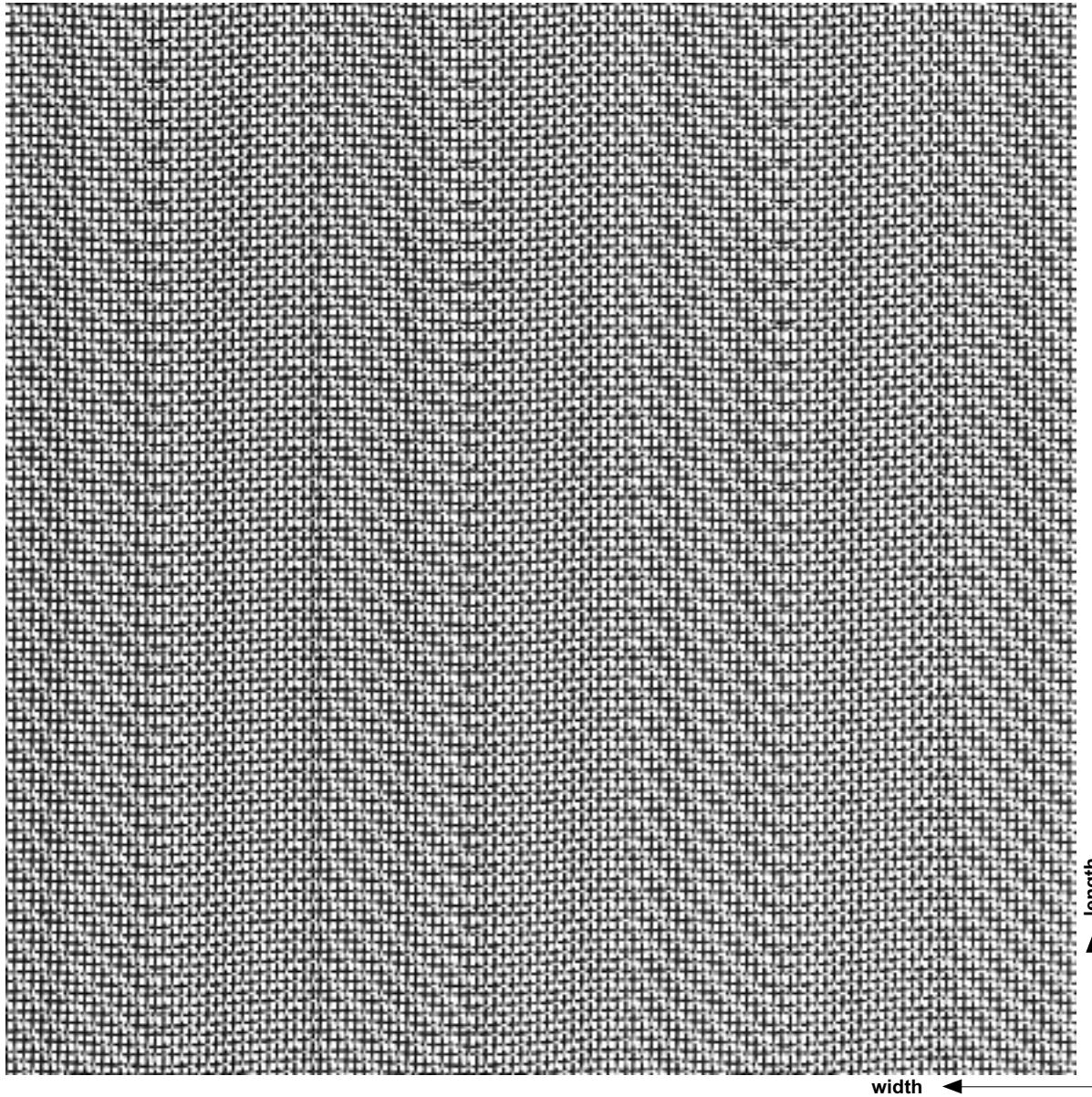


# LT 55



type of mesh	aperture (mm)	wire diameter (mm)	weight (kg/m <sup>2</sup> )	open area (%)	standard width (m)
<b>Alterna</b>	<b>0.71 x 0.9</b>	<b>0.56</b>	<b>3.0</b>	<b>34</b>	<b>1.25</b>
<b>application</b>			<b>ways of mounting</b>		
<ul style="list-style-type: none"> <li>• lowering elements for ceilings, coffered ceilings</li> <li>• wall or bar cladding</li> <li>• sun protection</li> </ul>			<ul style="list-style-type: none"> <li>• tensioning selvedge</li> <li>• eye rivet</li> <li>• glue framing</li> <li>• slot or frame section</li> </ul>		